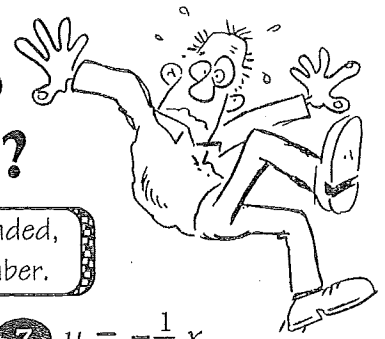


# What Happened to the Guy Who Fell Into an Upholstery Machine?



Use the slope and y-intercept to graph each equation. The graph, if extended, will cross a letter. Write this letter in the box containing the exercise number.

1  $y = \frac{3}{4}x - 2$

2  $y = -2x + 1$

3  $y = -\frac{5}{2}x - 4$

4  $y = \frac{1}{3}x + 4$

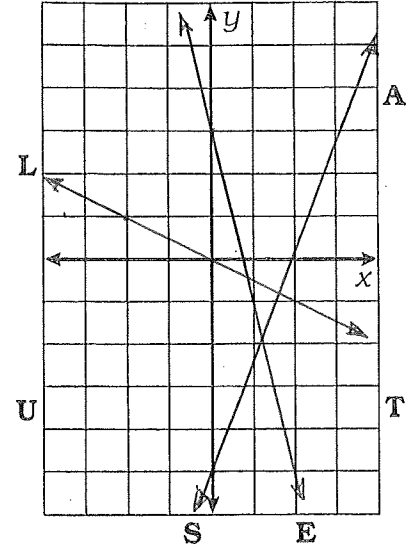
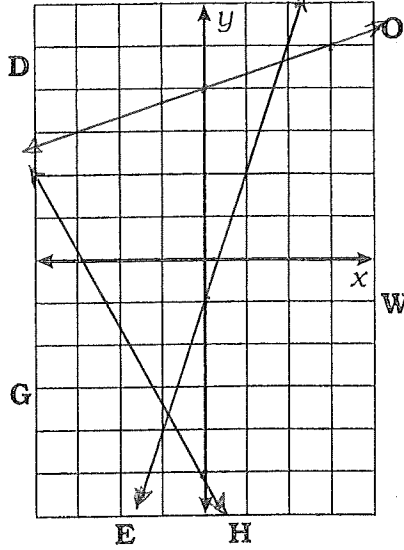
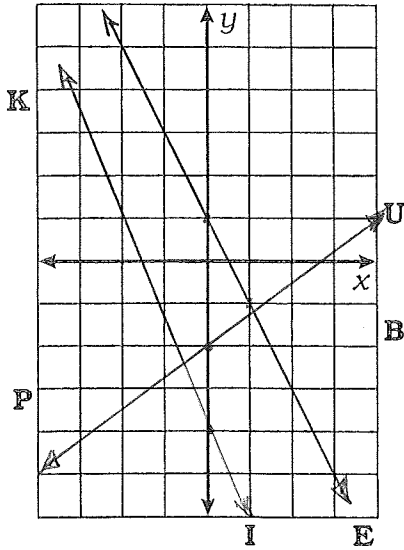
5  $y = 3x - 1$

6  $y = -\frac{7}{4}x - 5$

7  $y = -\frac{1}{2}x$

8  $y = -4x + 3$

9  $y = \frac{8}{3}x - 5$



10  $y = x + 3$

11  $y = -x - 4$

12  $y = x$

13 The temperature is  $-6^{\circ}\text{C}$  and rising at a rate of  $2^{\circ}$  per hour.

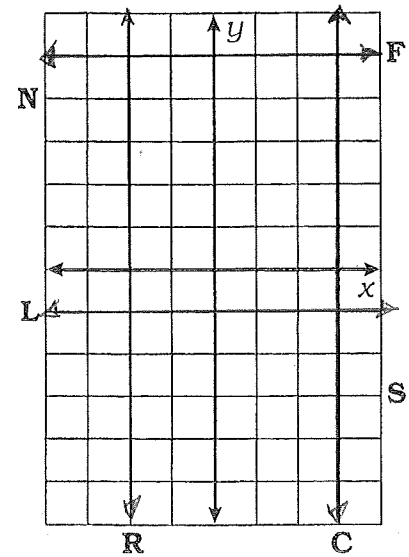
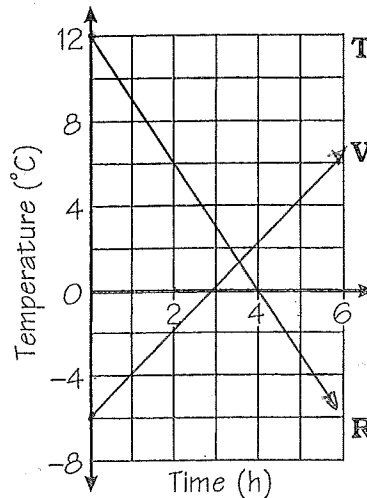
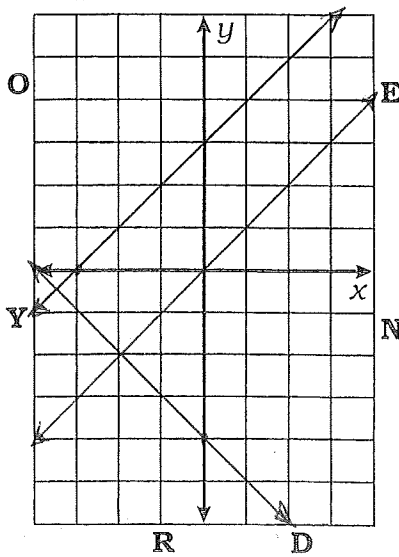
14 The temperature is  $12^{\circ}\text{C}$  and dropping at a rate of  $3^{\circ}$  per hour.

15  $y = 5$

17  $y = -1$

16  $x = -2$

18  $x = 3$



6 H 12 E 3 I 9 S 15 F 1 U 17 L 7 L 10 Y 14 R 8 E 18 C 4 O 13 V 2 E 16 R 5 E 11 D