

Calculating Percents

Using ratios:

Find 25% of \$240.

$$\frac{25}{100} = \frac{x}{240}$$

$$\frac{25}{100} = \frac{x}{240}$$

If 20% of a number is 32
find the number.

$$\frac{20}{100} = \frac{32}{x}$$

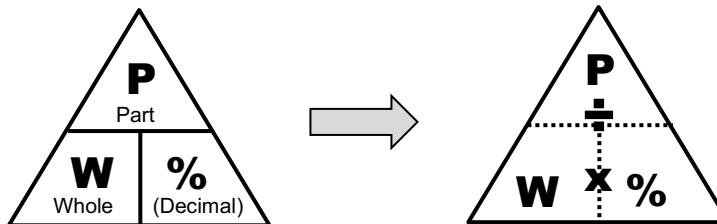
$$\frac{20}{100} = \frac{32}{x}$$

What percent is 15
out of 45?

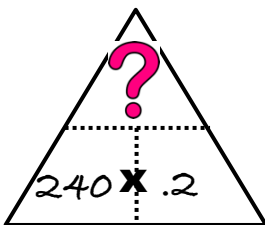
$$\frac{x}{100} = \frac{15}{45}$$

$$\frac{x}{100} = \frac{15}{45}$$

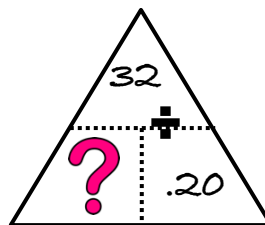
Using a Triangle:



Find 25% of \$240.



If 20% of a number is 32
find the number.



What percent is 15
out of 45?

